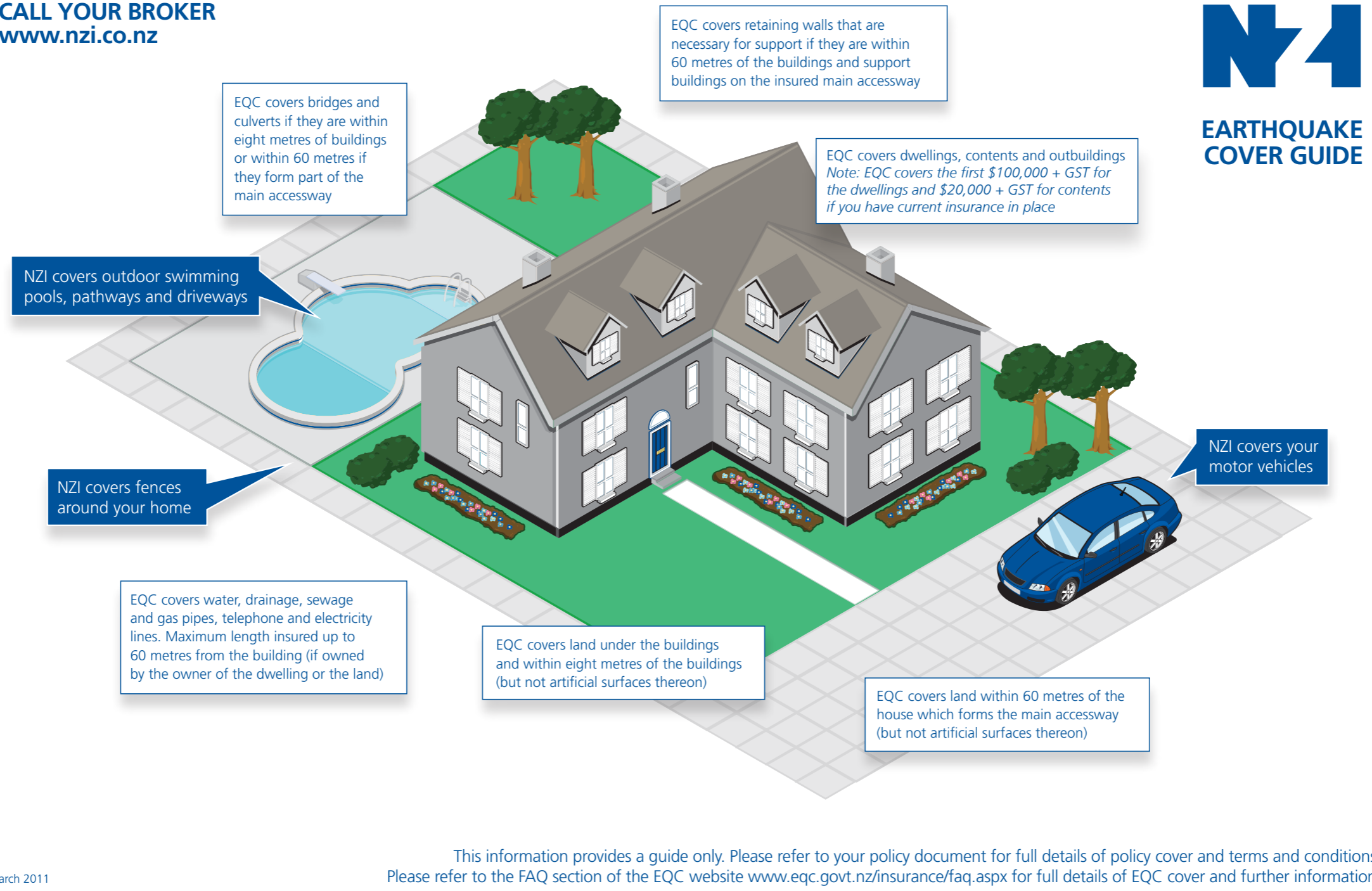


**CALL YOUR BROKER**  
[www.nzi.co.nz](http://www.nzi.co.nz)



## EARTHQUAKE COVER GUIDE



This information provides a guide only. Please refer to your policy document for full details of policy cover and terms and conditions. Please refer to the FAQ section of the EQC website [www.eqc.govt.nz/insurance/faq.aspx](http://www.eqc.govt.nz/insurance/faq.aspx) for full details of EQC cover and further information.